



# **ECONOMIC INDICATORS**

NEW SOUTH WALES

EMBARGO: 11:30AM (CANBERRA TIME) MON 16 JULY 2001

## **C O N T E N T S**

	<i>Page</i>
Notes . . . . .	2
NSW overview. . . . .	3
Main features . . . . .	4
List of tables and graphs . . . . .	5
Population . . . . .	6
Labour . . . . .	7
Production . . . . .	10
Building . . . . .	11
Retail trade . . . . .	12
New motor vehicle registrations . . . . .	13
Tourism . . . . .	14
Consumer and producer price indexes. . . . .	15
Finance . . . . .	16
State Government finance . . . . .	17
Investment. . . . .	18
International trade. . . . .	19

- For further information about these and related statistics, contact Jill Tomlinson on Sydney 02 9268 4123, or the National Information and Referral Service on 1300 135 070.

## NOTES

### FORTHCOMING ISSUES

<i>ISSUE</i>	<i>ISSUE DATE</i>
August 2001	15 August 2001
September 2001	17 September 2001
October 2001	15 October 2001
November 2001	15 November 2001
December 2001	17 December 2001
January 2002	15 January 2002

### DATA NOTES

ABS statistical series are being impacted to varying degrees as a result of The New Tax System (TNTS), introduced in Australia from 1 July 2000. TNTS included the removal of Wholesale Sales Tax and the introduction of a Goods and Services Tax (GST), and as a result, a wide range of ABS data series will reflect significant immediate and subsequent impacts. For further information see *Australian Economic Indicators, July 2000* (Cat. no. 1350.0).

### GENERAL

This publication provides information on a wide range of economic indicators which are the latest available at the time of publication. In a number of cases, figures appearing in this summary are preliminary and are subject to revision in subsequent issues.

### SEASONAL ADJUSTMENT AND TREND ESTIMATION

Seasonal adjustment is a means of removing the estimated effects of normal seasonal variation from a series so that the effects of other variations on that series can be more clearly recognised. This means that movements of seasonally adjusted estimates may not be reliable indicators of trend behaviour. Smoothing seasonally adjusted series produces a measure of the underlying trend by reducing the impact of the irregular component of the series. For an explanation of seasonal adjustment derivation, refer to the publication *Seasonally Adjusted Indicators* (Cat. no. 1308.0).

### SYMBOLS AND OTHER USAGES

FOB free on board  
 kWh kilowatt hour  
 n.a. not available  
 n.p. not available for publication but included in totals where applicable  
 n.y.a not yet available  
 r figure or series revised since previous issue  
 . . not applicable  
 — nil or rounded to zero  
 \_\_\_ break in continuity of series (where a line is drawn across a column between two consecutive figures)

Gregory W. Bray  
 Regional Director  
 New South Wales

## NSW OVERVIEW

POPULATION	The estimated resident population of NSW in the December quarter 2000 was 6,502,600 people.
EMPLOYMENT	Employment in NSW in May 2001 was a seasonally adjusted figure of 3,064,700 people. National employment in May 2001 was 9,151,500.
UNEMPLOYMENT	Unemployment in NSW was a seasonally adjusted figure of 189,400 in May 2001. The unemployment rate in NSW was 5.8% while the national unemployment rate was 6.9%.
INDUSTRIAL DISPUTES	In NSW in March 2001 there were 8,100 working days lost due to industrial disputes, a decrease of 32.5% on the working days lost in March 2000. Nationally, there were 35,300 working days lost due to industrial disputes in March 2001.
JOB VACANCIES	In NSW there were 28,400 job vacancies in March 2001, a decrease of 32% from March 2000. Nationally there were 83,400 job vacancies.
BUILDING APPROVALS	The seasonally adjusted number of new dwelling units approved for NSW in April 2001 was 2,740 dwelling units. This was a decrease of 26.9% on April 2000. Nationally, there were 9,725 new dwelling units approved.
RETAIL	In seasonally adjusted terms, total retail sales for NSW in April 2001 were \$4,629.6 million. Nationally, total retail sales were \$13,438.5 million.
NEW MOTOR VEHICLE REGISTRATIONS	In May 2001, there were 20,938 new motor vehicle registrations for NSW (seasonally adjusted). Nationally, there were 61,898 new motor vehicle registrations.
TOURISM	In NSW the room occupancy rate for the March quarter 2001 decreased by 2.4 percentage points to 57.9% compared with the previous March quarter. There was a decrease of 0.8 percentage points compared with the December quarter 2000.
FINANCE	The seasonally adjusted value of housing finance commitments for owner occupation in NSW in April 2001 was \$2,902 million, an increase of 20.6% on April 2000.
NSW GOVERNMENT FINANCE	The General Government operating surplus for NSW for the ten months ended 30 April 2001 was \$2,993 million. The General Government Budget Surplus for the same period was \$1,598 million.
INVESTMENT	Total actual private new fixed capital expenditure, current prices (trend) for NSW in March Quarter 2001 was \$3,329 million. The national figure was \$9,714 million.

## MAIN FEATURES

### TOURISM

In NSW the number of room nights occupied in licensed hotels, motels and guest houses and serviced apartments with 15 or more rooms or units in the March quarter 2001 was 3,421,100 room nights. At the national level, the number of room nights occupied was 10,188,500 room nights. In NSW, the room occupancy rate for licensed hotels, motels and guest houses and serviced apartments in the March quarter 2001 was 57.9%, a fall of 2.4 percentage points from the March quarter 2000. The national room occupancy rate in the March 2001 quarter was 57.7%.

In the Sydney Tourism region, the room occupancy rate for the March quarter 2001 for accommodation establishments overall was 67.1%, a decrease of 4.6 percentage points over the year. For the March quarter 2001 room occupancy rates for licensed hotels fell by 4.1 percentage points compared with the corresponding quarter in 2000 to 70.1%. The occupancy rate for motels and guest houses fell by 8.5 percentage points to 60.2%, while for serviced apartments there was a decrease in occupancy rate of 1.3 percentage points to 65.6%.

In NSW, takings from accommodation increased in the March quarter 2001 compared with the March quarter 2000 with an overall increase of 8.9% to \$433.2 million. In the Sydney Tourism Region, takings from accommodation were \$304.6 million for the March quarter 2001 which accounted for over 70% of the total for NSW.

### BUILDING APPROVALS

In NSW in April 2001 the number of new houses approved in seasonally adjusted terms was 1,576 which was a decrease of 28.8% from the corresponding period of the previous year. The seasonally adjusted number of new dwelling units in April 2001 was 2,740 which was a decrease of 26.9% from April 2000. Nationally, the number of new dwelling units was 9,725, a decrease of 29.2% from April 2000 while the number of new houses approved decreased by 28.2% over the year to 6,795 new houses.

The seasonally adjusted value of new residential building in NSW in April 2001 was \$381.7 million, a decrease of 21.2% from April 2000. The seasonally adjusted value of alterations and additions to residential building in April 2001 decreased by 19.9% over the year to \$97.7 million. Nationally, the seasonally adjusted value of new residential building in April 2001 was \$1,332.7 million and the value of alterations and additions to residential building was \$281.3 million.

The value, in original terms, of non-residential building in NSW decreased 59.4% from April 2000 to April 2001 to \$216.8 million. The value of all building in original terms in NSW was \$661.3 million, a decrease of 37.9% from April 2000. Nationally, the original value of all building was \$2,567.1 million in April 2001, a decrease of 11.7% from March 2001 and a decrease of 13.7% from April 2000.

## LIST OF TABLES AND GRAPHS

page

POPULATION	<b>1</b> Estimated resident population, NSW	6
LABOUR	<b>2</b> Labour data, latest time period, NSW and Australia	7
	<b>3</b> Labour data, time series, NSW	7
	<b>4</b> Labour force status of the civilian population, NSW	8
	<b>5</b> Graph: Unemployment rates, NSW and Australia	9
	<b>6</b> Coal and electricity production, latest time period, NSW and Australia	10
PRODUCTION	<b>7</b> Coal and electricity production, time series, NSW	10
BUILDING	<b>8</b> Building approvals, latest time period, NSW and Australia	11
	<b>9</b> Building approvals, time series, NSW	11
RETAIL TRADE	<b>10</b> Turnover of retail establishments, latest time period, NSW and Australia	12
	<b>11</b> Turnover of retail establishments, seasonally adjusted, time series, NSW	12
NEW MOTOR VEHICLE REGISTRATIONS	<b>12</b> New motor vehicle registrations, latest time period, NSW and Australia	13
	<b>13</b> New motor vehicle registrations, seasonally adjusted, time series, NSW	13
TOURISM	<b>14</b> Accommodation establishments, latest time period, NSW and Australia	14
	<b>15</b> Accommodation establishments, time series, Sydney and NSW	14
	<b>16</b> Graph: Hotels, motels etc., monthly room occupancy rates, Sydney Tourism Region and NSW	14
CONSUMER AND PRODUCER PRICE INDEXES	<b>17</b> Consumer and producer price indexes, latest time period, NSW and Australia	15
	<b>18</b> Consumer and producer price indexes, time series, NSW	15
	<b>19</b> Graph: Consumer Price Index, Sydney and average of eight capital cities	15
FINANCE	<b>20</b> Finance commitments, latest time period, NSW and Australia	16
	<b>21</b> Finance commitments, time series, NSW	16
STATE GOVERNMENT FINANCE	<b>22</b> Government finance, general government sector, monthly operating statement, NSW	17
INVESTMENT	<b>23</b> Actual private new fixed capital expenditure, latest time period, NSW and Australia	18
	<b>24</b> Actual private new fixed capital expenditure, time series, NSW	18
	<b>25</b> Graph: Actual private new fixed capital expenditure by type of asset, trend estimate, NSW	18
INTERNATIONAL TRADE	<b>26</b> Imports and exports, latest time period, NSW and Australia	19
	<b>27</b> Imports and exports, time series, NSW	19

1 ESTIMATED RESIDENT POPULATION — NSW

	Estimated resident population at end of period			Increase during period			Mean estimated resident population for year ended	
	Males	Females	Persons	Natural increase(a)	Net estimated migration(b)	Total increase	30 June	31 December
	'000	'000	'000	'000	'000	'000	'000	'000
<b>1998</b>	3 164.5	3 204.0	6 368.5	39.9	28.1	68.1	6 303.5	6 335.7
<b>1999</b>	3 198.5	3 235.1	6 433.6	42.3	22.7	65.0	6 367.3	6 397.6
<b>2000</b>	3 235.3	3 267.3	6 502.6	41.0	28.1	69.0	6 433.3	6 468.3
<b>1999</b>								
March qtr	3 171.0	3 210.5	6 381.5	10.7	2.3	13.0	..	..
June qtr	3 179.2	3 217.5	6 396.7	10.1	5.1	15.2	..	..
September qtr	3 187.8	3 224.7	6 412.5	8.1	7.7	15.8	..	..
December qtr	3 198.5	3 235.1	6 433.6	13.4	7.7	21.1	..	..
<b>2000</b>								
March qtr	3 205.0	3 240.6	6 445.7	7.6	4.5	12.1	..	..
June qtr	3 214.6	3 248.9	6 463.5	12.5	5.2	17.8	..	..
September qtr	3 225.5	3 258.0	6 483.5	9.2	10.8	20.0	..	..
December qtr	3 235.3	3 267.3	6 502.6	11.6	7.6	19.2	..	..

(a) Excess of live births over deaths.

(b) Special arrangements were put in place to estimate net overseas migration data for September and December Quarters 2000 and thereby enable production of State and Territory population estimates. These estimates were based on a sample of passenger cards completed by persons arriving in or departing from Australia in the period August through to December 2000 together with other information available to the Department of Immigration and Multicultural Affairs (DIMA). Further information is available in Demography Working paper 2001/1-Estimating July to December 2000 Net Overseas Migration, available on the ABS website.

Source: Australian Demographic Statistics (Cat. no. 3101.0).

## 2 LABOUR — NSW AND AUSTRALIA

	Unit	Latest period	New South Wales				Australia		
			Latest figure	Change from prior period	Change from same period prior year	Latest figure	Change from prior period	Change from same period prior year	
				%	%	no.	%	%	
Employed persons (seasonally adjusted)	'000	May 2001	3 064.7	-0.2	0.3	9 151.5	—	1.1	
Unemployed persons (seasonally adjusted)	'000	May 2001	189.4	1.1	5.0	675.7	0.7	7.6	
Labour force (seasonally adjusted)	'000	May 2001	3 254.1	-0.1	0.6	9 827.2	—	1.5	
Participation rate (seasonally adjusted)	%	May 2001	62.6	-0.3	-0.5	63.9	—	0.3	
Unemployment rate (seasonally adjusted)	%	May 2001	5.8	1.8	3.6	6.9	1.5	6.2	
Industrial disputes — working days lost	'000	March 2001	8.1	-5.8	-32.5	35.3	50.9	-37.7	
Job vacancies	'000	March 2001	28.4	-11.0	-32.0	83.4	-12.7	-18.3	
Average weekly employee earnings — full-time adult ordinary time earnings (seasonally adjusted)	\$	February 2001	840.9	-0.4	3.6	808.7	0.8	4.6	

Source: Average Weekly Earnings, States and Australia (Cat. no. 6302.0); Industrial Disputes, Australia (Cat. no. 6321.0); Job Vacancies, Australia (Cat. no. 6354.0); Labour Force, Australia, Preliminary (Cat. no. 6202.0).

## 3 LABOUR — NSW

	Seasonally adjusted(a)						
	Employed persons	Unemployed persons	Labour force	Participation rate	Unemployment rate	Industrial disputes (working days lost)	Job vacancies
	'000	'000	'000	%	%	'000	'000
<b>2000</b>							
March	3 021.7	183.0	3 204.7	62.5	5.7	12.0	..
April	3 040.1	177.4	3 217.6	62.6	5.5	20.0	..
May	3 054.6	180.3	3 234.9	62.9	5.6	47.1	41.8
June	3 043.0	181.7	3 224.7	62.6	5.6	16.5	..
July	3 059.8	167.1	3 226.9	62.6	5.2	7.5	..
August	3 082.1	168.4	3 250.5	63.0	5.2	8.8	43.9
September	3 060.6	169.6	3 230.3	62.5	5.3	8.3	..
October	3 046.2	168.8	3 215.0	62.2	5.3	5.3	..
November	3 028.3	176.5	3 204.8	62.0	5.5	9.2	40.4
December	3 033.4	184.2	3 217.6	62.2	5.7	4.4	..
<b>2001</b>							
January	3 035.3	179.5	3 214.9	62.1	5.6	5.8	..
February	3 032.1	190.8	3 222.9	62.2	5.9	8.6	32.0
March	3 035.7	174.9	3 210.6	61.9	5.4	8.1	..
April	3 070.1	187.3	3 257.4	62.8	5.7	n.y.a.	..
May	3 064.7	189.4	3 254.1	62.6	5.8	n.y.a.	28.4

(a) Seasonally adjusted estimates have been revised from February 1978 to reflect the annual reanalysis of seasonal factors which occurs in February each year. For further information please see the feature article in the February 2001 edition of *Labour Force, Australia* (Cat. no. 6203.0).

Source: Industrial Disputes, Australia (Cat. no. 6321.0); Job Vacancies, Australia (Cat. no. 6354.0); Labour Force, Australia, Preliminary (Cat. no. 6202.0).

4 LABOUR FORCE STATUS, NSW — ORIGINAL

	<u>Employed</u>		<u>Unemployed</u>		Labour force	Not in labour force	Civilian population aged 15 years and over	Unemployment rate(a)	Participation rate(b)
	Full-time workers	Total	Looking for full-time work	Total					
	'000	'000	'000	'000					
<b>MALES</b>									
<b>May</b>									
1997 r	1 410.7	1 601.6	122.9	137.3	1 739.0	681.8	2 420.8	7.9	71.8
1998 r	1 435.6	1 618.4	114.0	129.6	1 748.0	706.2	2 454.3	7.4	71.2
1999 r	1 460.8	1 664.5	91.9	107.6	1 772.1	717.9	2 490.0	6.1	71.2
<b>2000</b>									
March	1 494.6	1 704.6	92.8	111.0	1 815.5	708.5	2 524.0	6.1	71.9
April	1 506.1	1 719.0	80.4	98.0	1 817.1	710.5	2 527.6	5.4	71.9
May	1 504.9	1 720.8	79.0	96.8	1 817.7	713.5	2 531.1	5.3	71.8
June	1 518.4	1 720.1	84.6	98.4	1 818.5	716.2	2 534.7	5.4	71.7
July	1 529.6	1 736.5	78.9	94.2	1 830.7	706.9	2 537.6	5.1	72.1
August	1 492.9	1 704.6	86.1	97.5	1 802.2	738.4	2 540.5	5.4	70.9
September	1 519.5	1 742.4	85.2	101.2	1 843.6	699.9	2 543.5	5.5	72.5
October	1 507.8	1 724.6	82.9	95.9	1 820.5	725.0	2 545.5	5.3	71.5
November	1 489.4	1 701.9	87.6	102.4	1 804.3	743.2	2 547.4	5.7	70.8
December	1 513.6	1 729.5	93.4	110.4	1 839.9	709.5	2 549.4	6.0	72.2
<b>2001</b>									
January	1 475.8	1 685.8	104.5	120.3	1 806.1	745.2	2 551.3	6.7	70.8
February	1 479.1	1 684.9	103.8	124.4	1 809.2	743.9	2 553.2	6.9	70.9
March	1 484.0	1 700.1	90.8	108.5	1 808.5	746.5	2 555.1	6.0	70.8
April	1 480.8	1 714.1	89.1	105.1	1 819.1	738.5	2 557.6	5.8	71.1
May	1 478.0	1 713.1	89.0	107.8	1 820.9	739.3	2 560.1	5.9	71.1
<b>FEMALES</b>									
<b>May</b>									
1997 r	722.6	1 212.4	65.5	96.3	1 308.8	1 203.3	2 512.1	7.4	52.1
1998 r	710.5	1 228.7	66.9	88.1	1 316.9	1 226.5	2 543.3	6.7	51.8
1999 r	729.9	1 253.4	55.5	85.6	1 339.0	1 237.2	2 576.1	6.4	52.0
<b>2000</b>									
March	771.5	1 312.8	56.7	87.4	1 400.2	1 205.4	2 605.6	6.2	53.7
April	791.3	1 322.0	52.1	78.8	1 400.8	1 207.6	2 608.4	5.6	53.7
May	785.6	1 327.3	52.5	81.4	1 408.7	1 202.5	2 611.2	5.8	53.9
June	783.4	1 329.0	39.4	72.4	1 401.4	1 212.6	2 614.0	5.2	53.6
July	812.3	1 346.6	36.0	57.8	1 404.4	1 212.2	2 616.7	4.1	53.7
August	787.5	1 334.4	39.7	67.3	1 401.7	1 217.6	2 619.3	4.8	53.5
September	805.6	1 359.4	42.6	70.6	1 429.9	1 192.1	2 622.0	4.9	54.5
October	785.4	1 336.8	39.4	63.4	1 400.2	1 223.3	2 623.5	4.5	53.4
November	787.6	1 320.8	43.0	67.2	1 388.0	1 236.9	2 624.9	4.8	52.9
December	799.2	1 345.9	53.4	74.3	1 420.2	1 206.2	2 626.4	5.2	54.1
<b>2001</b>									
January	787.5	1 305.9	46.2	69.2	1 375.1	1 252.6	2 627.7	5.0	52.3
February	790.6	1 321.2	59.6	91.0	1 412.1	1 216.9	2 629.0	6.4	53.7
March	800.3	1 331.2	45.7	81.0	1 412.2	1 218.1	2 630.3	5.7	53.7
April	785.7	1 357.1	48.2	81.4	1 438.5	1 193.7	2 632.3	5.7	54.7
May	781.5	1 344.7	50.2	79.1	1 423.8	1 210.4	2 634.2	5.6	54.1

(a) For footnotes see end of table.



4 LABOUR FORCE STATUS, NSW — ORIGINAL(a) — continued

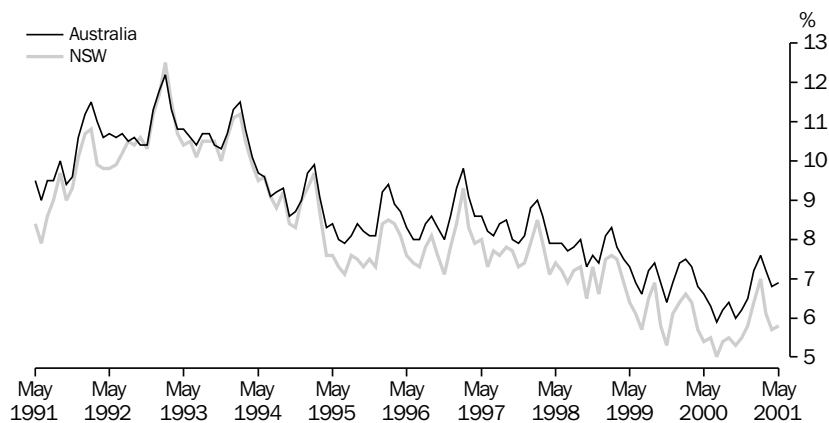
	<u>Employed</u>		<u>Unemployed</u>		Labour force	Not in labour force	Civilian population aged 15 years and over	Unemployment rate(a)	Participation rate(b)
	Full-time workers	Total	Looking for full-time work	Total					
	'000	'000	'000	'000					
PERSONS									
<b>May</b>									
1997 r	2 133.3	2 814.1	188.4	233.7	3 047.7	1 885.1	4 932.8	7.7	61.8
1998 r	2 146.2	2 847.2	180.8	217.7	3 064.9	1 932.7	4 997.6	7.1	61.3
1999 r	2 190.6	2 917.9	147.4	193.2	3 111.1	1 955.1	5 066.1	6.2	61.4
<b>2000</b>									
March	2 266.1	3 017.4	149.4	198.3	3 215.7	1 913.9	5 129.7	6.2	62.7
April	2 297.4	3 041.0	132.5	176.9	3 217.9	1 918.1	5 136.0	5.5	62.7
May	2 290.5	3 048.1	131.4	178.2	3 226.3	1 916.0	5 142.3	5.5	62.7
June	2 301.7	3 049.1	124.0	170.8	3 219.9	1 928.7	5 148.6	5.3	62.5
July	2 341.9	3 083.1	114.9	152.0	3 235.1	1 919.1	5 154.3	4.7	62.8
August	2 280.4	3 039.0	125.8	164.9	3 203.9	1 956.0	5 159.9	5.1	62.1
September	2 325.2	3 101.7	127.8	171.8	3 273.5	1 892.0	5 165.5	5.2	63.4
October	2 293.3	3 061.4	122.3	159.3	3 220.7	1 948.3	5 169.0	4.9	62.3
November	2 277.0	3 022.7	130.5	169.6	3 192.3	1 980.1	5 172.4	5.3	61.7
December	2 312.8	3 075.4	146.8	184.7	3 260.1	1 915.7	5 175.8	5.7	63.0
<b>2001</b>									
January	2 263.4	2 991.7	150.8	189.4	3 181.2	1 997.8	5 179.0	6.0	61.4
February	2 269.7	3 006.0	163.4	215.3	3 221.4	1 960.8	5 182.2	6.7	62.2
March	2 284.3	3 031.3	136.5	189.5	3 220.8	1 964.6	5 185.4	5.9	62.1
April	2 266.5	3 071.2	137.2	186.5	3 257.7	1 932.2	5 189.9	5.7	62.8
May	2 259.4	3 057.7	139.2	186.9	3 244.7	1 949.7	5 194.4	5.8	62.5

(a) The number of unemployed in each group expressed as a percentage of the labour force in the same group.

(b) The labour force in each group expressed as a percentage of the civilian population aged 15 years and over in the same group.

Source: Labour Force, Australia, Preliminary (Cat. no. 6202.0).

5 UNEMPLOYMENT RATE — ORIGINAL



Source: Labour Force, Australia, Preliminary (Cat. no. 6202.0)

6 COAL AND ELECTRICITY PRODUCTION, NSW AND AUSTRALIA — ORIGINAL

	Unit	New South Wales				Australia		
		Latest period	Latest figure	Change from prior period	Change from same period prior year	Latest figure	Change from prior period	Change from same period prior year
				%	%		%	%
Raw coal won								
Underground	'000 tonnes	Apr 2001	3 446	-37.1	-10.6	6 505	-21.9	-17.3
Open cut	'000 tonnes	Apr 2001	7 140	-9.0	40.4	19 029	-3.9	39.3
Total	'000 tonnes	Apr 2001	10 586	-20.5	18.4	25 534	-9.3	18.6
Electricity	mill. kWh	Mar qtr 2001	16 644	-0.6	1.9	46 865	1.9	1.8

Source: Joint Coal Board for NSW and Australia from ABS unpublished statistics, Manufacturing Production, Australia (Cat. no. 8301.0).

7 COAL AND ELECTRICITY PRODUCTION, NSW — ORIGINAL

	Raw coal won			Electricity mill. kWh
	Underground	Open cut	Total	
	'000 tonnes	'000 tonnes	'000 tonnes	
<b>1997-1998</b>	58 299	75 710	134 009	61 804
<b>1998-1999</b>	51 158	80 209	131 367	63 743
<b>1999-2000 r</b>	52 785	79 768	132 553	65 934
<b>1999</b>				
December	4 662	7 066	11 728	—
<b>2000</b>				
January	3 633	5 922	9 555	—
February	3 834	6 394	10 228	16 339
March	4 799	6 549	11 348	—
April r	3 855	5 084	8 939	—
May	5 601	8 611	14 212	17 334
June	3 793	6 443	10 237	—
July	3 958	6 161	10 119	—
August	5 609	8 310	13 919	19 289
September	3 838	7 198	11 036	—
October	4 523	6 976	11 499	—
November	5 679	7 830	13 509	16 749
December	3 166	6 253	9 419	—
<b>2001</b>				
January	3 216	6 343	9 559	—
February	4 209	5 934	10 143	16 644
March	5 475	7 842	13 317	—
April	3 446	7 140	10 586	—

Source: Joint Coal Board, Manufacturing Production, Australia (Cat. no. 8301.0).

8 BUILDING APPROVALS — NSW AND AUSTRALIA

	New South Wales					Australia		
	Unit	Latest period	Latest figure	Change from prior period %	Change from same period prior year %	Latest figure	Change from prior period %	Change from same period prior year %
Number of dwelling units(a) (seasonally adjusted (b))								
New houses	no.	Apr 2001	1 576	1.9	-28.8	6 795	8.3	-28.2
Total	no.	Apr 2001	2 740	-1.8	-26.9	9 725	0.9	-29.2
Value of new residential building (seasonally adjusted)	\$m	Apr 2001	381.7	-0.4	-21.2	1 332.7	-1.1	-21.5
Value of alterations and additions to residential building(c) (seasonally adjusted)	\$m	Apr 2001	97.7	-3.7	-19.9	281.3	-5.2	-7.8
Value of non-residential building(d) (original)	\$m	Apr 2001	216.8	4.1	-59.4	1 076.5	-14.6	-11.2
Value of all building (original)	\$m	Apr 2001	661.3	0.4	-37.9	2 567.1	-11.7	-13.7

(a) Includes dwelling units approved as part of the construction of non-residential building and alterations and additions to existing buildings (including conversions to dwelling units).

(b) Seasonally adjusted and trend estimates to November 2000 have been revised. See *Building Approvals, Australia* (Cat. no. 8731.0).

(c) Valued at \$10,000 or more. Includes conversions of existing buildings into residential buildings.

(d) Valued at \$50,000 or more.

Source: *Building Approvals, Australia* (Cat. no. 8731.0).

9 BUILDING APPROVALS — NSW

	Number of dwelling units(a), seasonally adjusted				Value of building approvals(b)			
	New houses		Total		Seasonally adjusted		Original	
	Private sector	Total	Private sector	Total	New residential building	Alterations and additions to residential building(c)	Non-residential building(d)	All building
	no.	no.	no.	no.				
<b>1997-1998</b>	..	..	..	..	..	..	5 910.9	13 348.6
<b>1998-1999</b>	..	..	..	..	..	..	4 555.3	12 026.7
<b>1999-2000</b>	..	..	..	..	..	..	4 477.3	12 560.8
<b>2000</b>								
February	2 914	2 930	4 305	4 419	574.7	124.9	284.0	961.5
March	2 810	2 820	4 281	4 310	547.3	127.3	452.2	1 124.8
April	2 191	2 212	3 606	3 747	484.6	121.9	533.7	1 064.1
May	2 048	2 066	3 870	3 955	533.6	124.3	311.5	1 098.8
June	1 876	1 883	3 162	3 285	447.8	83.3	350.0	860.9
July r	1 302	1 309	1 832	1 919	283.9	75.0	287.4	668.8
August r	1 475	1 484	2 398	2 467	374.8	78.3	280.4	770.5
September r	1 404	1 410	2 700	2 785	398.0	81.3	309.8	765.9
October r	1 728	1 738	3 555	3 599	461.8	115.6	381.2	942.5
November r	1 561	1 570	2 991	3 071	411.5	83.1	270.1	858.3
December r	1 471	1 483	2 873	2 973	386.4	154.6	208.9	693.6
<b>2001</b>								
January r	1 591	1 599	2 908	2 954	437.1	74.5	553.1	1 007.1
February r	1 689	1 695	2 470	2 636	354.0	87.9	388.8	810.3
March r	1 535	1 547	2 710	2 789	383.4	101.5	208.3	658.8
April	1 570	1 576	2 624	2 740	381.7	97.7	216.8	661.3

(a) Includes dwelling units approved as part of the construction of non-residential building and alterations and additions to existing buildings (including conversions to dwelling units).

(b) From July 2000, value data for both residential and non-residential building approvals will be on a GST inclusive basis.

(c) Valued at \$10,000 or more. Includes conversions of existing buildings into residential buildings.

(d) Valued at \$50,000 or more.

Source: *Building Approvals, Australia* (Cat. no. 8731.0).

10 TURNOVER OF RETAIL ESTABLISHMENTS(a), NSW AND AUSTRALIA(b) — SEASONALLY ADJUSTED

	Latest period	New South Wales			Australia		
		Latest figure \$m	Change from prior period		Latest figure \$m	Change from prior period	
			%	%		%	%
Food retailing	Apr 2001	1 730.4	3.0	11.0	5 375.0	1.6	9.7
Department stores	Apr 2001	389.0	0.5	3.5	1 126.2	-0.9	2.6
Clothing and soft good retailing	Apr 2001	332.3	3.6	10.4	898.3	1.0	11.2
Household good retailing	Apr 2001	486.9	-0.8	8.5	1 539.2	2.9	8.8
Recreational good retailing	Apr 2001	219.9	-6.9	8.5	624.5	-1.3	3.2
Other retailing	Apr 2001	481.5	2.3	12.8	1 506.2	1.6	14.7
Hospitality and services	Apr 2001	989.6	-1.5	12.9	2 369.1	-0.1	14.6
<b>Total value of retail sales</b>	<b>Apr 2001</b>	<b>4 629.6</b>	<b>0.9</b>	<b>10.5</b>	<b>13 438.5</b>	<b>1.0</b>	<b>10.1</b>

(a) The figures shown are derived from a monthly survey of retail establishments. Excludes motor vehicle, boat and caravan dealers, service stations, smash repairers, tyre and battery retailers, bread and milk vendors, footwear repairers and electrical appliance repairers n.e.c. Retail establishments which do not have employees are excluded from the survey. Turnover includes retail sales, wholesale sales, takings from repairs, meals and hiring of goods; and commissions from agency activity (e.g. commissions received from collecting dry cleaning, selling lottery tickets etc.).

(b) Data from July 2000 reference month onwards are recorded inclusive of GST.

Source: Retail Trade, Australia (Cat. no. 8501.0).

11 TURNOVER OF RETAIL ESTABLISHMENTS(a), NSW(b) — SEASONALLY ADJUSTED(c)

	Food retailing	Department stores	Clothing and soft good retailing	Household good retailing	Recreational good retailing	Other retailing	Hospitality and services	Total
	\$m	\$m	\$m	\$m	\$m	\$m	\$m	\$m
<b>2000</b>								
February	1 540.9	376.3	294.4	457.3	195.1	429.0	862.2	4 155.3
March	1 551.9	374.3	318.9	452.8	197.6	426.8	865.9	4 188.1
April	1 559.4	375.9	301.1	448.6	202.6	426.9	876.6	4 191.1
May	1 553.3	382.8	314.1	459.8	211.4	438.0	873.0	4 232.3
June	1 586.3	463.8	373.8	579.4	203.2	478.9	888.1	4 573.5
July	1 601.0	299.0	276.2	425.9	220.0	394.5	925.5	4 142.0
August	1 635.7	397.3	300.0	473.7	212.8	425.2	991.1	4 435.7
September	1 649.4	393.5	366.4	467.3	206.2	462.2	1 054.4	4 599.3
October	1 630.8	386.9	308.1	469.5	213.8	450.6	985.2	4 444.8
November	1 605.6	373.9	304.9	484.2	211.8	439.8	951.9	4 372.2
December	1 641.7	392.9	312.4	487.7	209.4	450.8	936.8	4 431.7
<b>2001</b>								
January	1 669.8	388.4	304.4	493.2	227.3	455.3	988.0	4 526.4
February	1 677.7	390.5	298.2	481.6	241.2	472.1	996.7	4 558.1
March	1 679.3	387.0	320.9	490.7	236.3	470.6	1 004.7	4 589.4
April	1 730.4	389.0	332.3	486.9	219.9	481.5	989.6	4 629.6

(a) The figures shown are derived from a monthly survey of retail establishments. Excludes motor vehicle, boat and caravan dealers, service stations, smash repairers, tyre and battery retailers, bread and milk vendors, footwear repairers and electrical appliance repairers n.e.c. Retail establishments which do not have employees are excluded from the survey. Turnover includes retail sales, wholesale sales, takings from repairs, meals and hiring of goods; and commissions from agency activity (e.g. commissions received from collecting dry cleaning, selling lottery tickets etc.).

(b) Data from July 2000 reference month onwards are recorded inclusive of GST.

(c) Data for previous months have been revised due to concurrent seasonal adjustment methodology. See Explanatory Notes in Retail Trade, Australia (Cat. no. 8501.0).

Source: Retail Trade, Australia (Cat. no. 8501.0).

12 NEW MOTOR VEHICLE REGISTRATIONS(a), NSW AND AUSTRALIA — SEASONALLY ADJUSTED(b)

	Latest period	New South Wales				Australia	
		Latest figure no.	Change from prior period	Change from same period prior year	Latest figure no.	Change from prior period	Change from same period prior year
			%	%		%	%
Passenger vehicles	May 2001	17 989	-0.9	5.9	52 423	-5.4	7.4
Other vehicles (excluding motor cycles)	May 2001	2 949	-4.4	-19.6	9 475	-5.7	-12.9
Total registrations (excluding motor cycles)	May 2001	20 938	-1.4	1.4	61 898	-5.5	3.7

(a) Includes vehicles (other than those of the defence forces) owned by Government departments and authorities. Excludes mobile plant and equipment, tractors, trailers and non-motorised caravans.

(b) The changes to the seasonally adjusted series result from the annual re-estimation of seasonal factors.

Source: *New Motor Vehicle Registrations, Australia, Preliminary (Cat. no. 9301.0)*.

13 NEW MOTOR VEHICLE REGISTRATIONS(a), NSW — SEASONALLY ADJUSTED(b)

	Passenger vehicles no.	Other vehicles (excluding motor cycles) no.	Total (excluding motor cycles) no.
<b>2000</b>			
March	17 932	3 538	21 470
April	17 608	3 581	21 189
May	16 985	3 670	20 655
June	13 466	3 651	17 117
July	23 670	3 066	26 736
August	23 809	3 616	27 425
September	19 247	3 387	22 634
October	18 823	3 328	22 151
November	19 611	3 063	22 673
December	21 804	3 430	25 234
<b>2001</b>			
January	18 585	3 529	22 114
February	17 706	3 290	20 996
March	18 293	3 108	21 401
April	18 160	3 086	21 246
May	17 989	2 949	20 938

(a) Includes vehicles (other than those of the defence forces) owned by Government departments and authorities. Excludes mobile plant and equipment, tractors, trailers and non-motorised caravans.

(b) The changes to the seasonally adjusted series result from the annual re-estimation of seasonal factors.

Source: *New Motor Vehicle Registrations, Australia, Preliminary (Cat. no. 9301.0)*.

14 ACCOMMODATION ESTABLISHMENTS(a) NSW AND AUSTRALIA — ORIGINAL

	Unit	Latest period	New South Wales		Australia	
			Latest figure	Change from prior period %	Latest figure	Change from same period prior year %
Room nights	'000	Mar qtr 2001	3 421.1	-2.2	10 188.5	-3.4
Room occupancy rate	%	Mar qtr 2001	57.9	-1.4	57.7	-1.9
Takings(b)	\$'000	Mar qtr 2001	433 156	-6.0	1 191 842	-3.9

(a) Licensed hotels with facilities, motels and guest houses and serviced apartments with 15 or more rooms or units.

(b) Includes GST.

Source: Tourist Accommodation, Australia (Cat. no. 8635.0).

15 ACCOMMODATION ESTABLISHMENTS(a) SYDNEY AND NSW — ORIGINAL

	Sydney Tourism Region(b)			New South Wales		
	Room nights '000	Room occupancy rate %	Takings(c) \$'000	Room nights '000	Room occupancy rate %	Takings \$'000
<b>1999</b>						
December qtr	1 962.5	72.3	276 165	3 423.1	60.9	395 165
<b>2000</b>						
March qtr	1 980.0	71.7	279 374	3 388.1	60.3	397 869
June qtr	1 902.6	67.1	258 225	3 324.0	58.1	374 005
September qtr	2 093.6	69.6	412 378	3 543.3	59.7	555 244
December qtr	2 096.0	68.8	334 433	3 498.0	58.7	460 756
<b>2001</b>						
March qtr	2 037.9	67.1	304 602	3 421.1	57.9	433 156

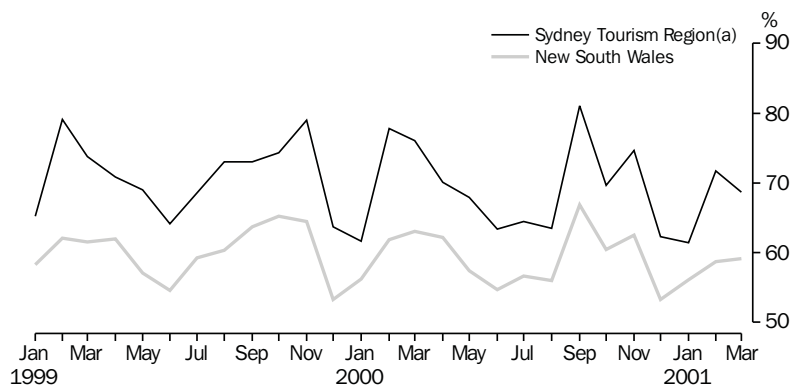
(a) Licensed hotels with facilities, motels and guest houses and serviced apartments with 15 or more rooms or units.

(b) Excludes Gosford, Wyong and Blue Mountains Statistical Local Areas.

(c) Takings after 1 July 2000 are on a GST inclusive basis.

Source: Tourist Accommodation, Small Area Data, New South Wales (Cat. no. 8635.1.40.001).

16 ACCOMMODATION ESTABLISHMENTS, MONTHLY ROOM OCCUPANCY RATE — ORIGINAL



(a) Excludes Gosford, Wyong and Blue Mountains Statistical Local Areas.

Source: Tourist Accommodation, Small Area Data, NSW (Prod. no. 8635.1.40.001).

## 17 CONSUMER AND PRODUCER PRICE INDEXES — NSW AND AUSTRALIA

	Unit	Latest period	Latest figure	New South Wales(a)		Australia(b)		
				Change from prior period	Change from same period prior year	Change from prior period	Change from same period prior year	
				%	%	%	%	
Consumer Price Index (all groups)	1989-90 = 100.0	Mar qtr 2001	134.0	1.4	6.5	132.7	1.1	6.0
Price index of materials used in house building (all groups)	1989-90 = 100.0	Mar qtr 2001	129.8	—	1.4	124.2	-0.2	0.3
Price index of materials used in building other than house building (all groups)	1989-90 = 100.0	Mar qtr 2001	116.4	0.6	—	116.7	0.3	0.3

(a) Refers to State capital city — Sydney.

(b) For the Consumer Price Index this is the weighted average of eight capital cities and for the other two indexes, the weighted average of the six State capital cities.

Source: Consumer Price Index, Australia (Cat. no. 6401.0); Price Index of Materials Used in Building Other Than House Building, Six State Capital Cities (Cat. no. 6407.0); Price Index of Materials Used in House Building, Six State Capital Cities (Cat. no. 6408.0).

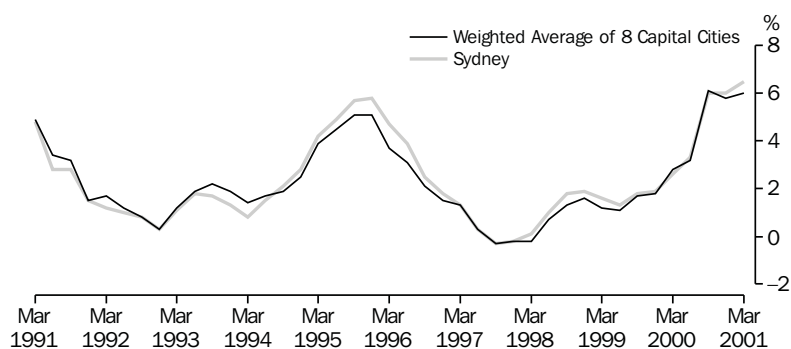
## 18 CONSUMER AND PRODUCER PRICE INDEXES — NSW(a)

	Consumer Price Index, all groups	Price Index of materials used in house building, all groups	Price Index of materials used in building other than house building, all groups
	1989-90 = 100.0	1989-90 = 100.0	1989-90 = 100.0
<b>1999</b>			
December qtr	124.7	124.4	115.3
<b>2000</b>			
March qtr	125.8	128.0	116.4
June qtr	127.0	131.2	117.3
September qtr	131.6	130.0	115.4
December qtr	132.2	129.8	115.7
<b>2001</b>			
March qtr	134.0	129.8	116.4

(a) Refers to State capital city — Sydney.

Source: Consumer Price Index, Australia (Cat. no. 6401.0); Price Index of Materials Used in Building Other Than House Building, Six State Capital Cities (Cat. no. 6407.0); Price Index of Materials Used in House Building, Six State Capital Cities (Cat. no. 6408.0).

## 19 CONSUMER PRICE INDEX, ANNUAL RATE OF CHANGE



Source: Consumer Price Index (Cat. no. 6401.0).

20 SECURED HOUSING FINANCE COMMITMENTS TO INDIVIDUALS FOR OWNER OCCUPATION — NSW AND AUSTRALIA

	Latest period	New South Wales			Australia		
		Latest figure	Change from prior period	Change from same period prior year	Latest figure	Change from prior period	Change from same period prior year
			\$m	%		%	\$m
Lending commitments for the construction or purchase of dwellings —							
Construction of dwellings	Apr 2001	180	-4.8	-15.5	637	-5.9	-4.2
Purchase of newly erected dwellings	Apr 2001	101	-15.8	31.2	235	-12.3	27.0
Purchase of established dwellings(a)	Apr 2001	1 950	-7.1	23.3	4 320	-8.6	22.9
Refinancing of existing dwellings	Apr 2001	580	-6.8	62.0	1 336	-8.6	51.3
Lending commitments for alterations and additions	Apr 2001	103	-7.2	9.6	267	-8.2	19.7
Total lending commitments to individuals for housing(b)	Apr 2001	2 811	-7.2	26.1	6 528	-8.5	24.3
Total lending commitments to individuals for housing (seasonally adjusted)(b)	Apr 2001	2 902	3.6	20.6	6 957	4.7	19.3

(a) Excludes refinancing.

(b) Excludes alterations and additions.

Source: *Housing Finance for Owner Occupation, Australia (Cat. no. 5609.0)*.

21 SECURED HOUSING FINANCE COMMITMENTS TO INDIVIDUALS FOR OWNER OCCUPATION — NSW

	Lending commitments for the construction or purchase of dwellings					Total lending commitments to individuals for housing(b)	
	Construction of dwellings	Purchase of newly erected dwellings	Purchase of established dwellings(a)	Refinancing of existing dwellings	Lending commitments for alterations and additions	Original	Seasonally adjusted
	\$m	\$m	\$m	\$m	\$m	\$m	\$m
<b>1997-1998</b>	2 625	1 280	14 445	3 573	1 174	21 923	..
<b>1998-1999</b>	2 990	1 147	16 761	4 026	1 126	24 925	..
<b>1999-2000</b>	3 268	1 129	21 637	4 993	1 271	31 027	..
<b>2000</b>							
February	324	103	1 759	423	114	2 609	2 656
March	296	101	1 956	488	123	2 842	2 492
April	213	77	1 581	358	94	2 229	2 407
May	246	94	1 909	524	119	2 772	2 402
June	197	86	1 629	474	105	2 386	2 232
July	170	71	1 436	451	89	2 129	2 166
August	166	88	1 710	480	91	2 444	2 336
September	152	83	1 467	418	84	2 120	2 165
October	151	65	1 397	492	90	2 105	2 123
November	160	82	1 757	542	85	2 542	2 357
December	143	88	1 688	483	80	2 402	2 690
<b>2001</b>							
January	121	97	1 497	426	79	2 141	2 644
February	151	88	1 630	455	96	2 323	2 464
March	189	120	r 2 098	r 622	111	r 3 029	r 2 801
April	180	101	1 950	580	103	2 811	2 902

(a) Excludes refinancing.

(b) Excludes alterations and additions.

Source: *Housing Finance for Owner Occupation, Australia (Cat. no. 5609.0)*.



22 NSW GOVERNMENT FINANCE, GENERAL GOVERNMENT SECTOR(a)

	Budget 12 months to 30/06/2001	Actual 10 months to 30/04/2001
	\$m	\$m
<b>State revenues</b>		
Taxation	12 412	10 793
Commonwealth grants	12 780	10 876
Capital Repatriations	2 400	3 203
Financial Distributions	1 210	1 007
Fines, regulatory fees and other	792	768
<i>Total state revenues</i>	<i>29 594</i>	<i>26 647</i>
<b>Operating revenues</b>		
Sale of goods and services	2 171	1 860
Investment income	391	403
Grants and contributions	421	431
Other revenue	298	231
<i>Total operating revenues</i>	<i>3 281</i>	<i>2 925</i>
<b>Expenses</b>		
Employee Related — super valuations	0	1 074
Employee Related — super other	1 540	1 375
Employee related — other	12 157	10 178
Other operating	6 765	5 762
Maintenance	1 120	845
Depreciation and amortisation	995	1 193
Recurrent grants and subsidies	4 060	3 699
Capital grants and subsidies	1 252	926
Finance valuations	278	703
Finance other	1 009	833
<i>Total expenses</i>	<i>29 176</i>	<i>26 588</i>
<b>Gain/(loss) on sale of non-current assets</b>	<b>-14</b>	<b>9</b>
<b>Net cost of services</b>	<b>25 909</b>	<b>23 654</b>
<b>Operating Surplus</b>	<b>3 685</b>	<b>2 993</b>
less valuation gains	-1 888	-927
less capital acquisitions	-2 540	-1743
plus depreciation	995	1 193
plus asset sales & other	407	82
<b>Budget Surplus</b>	<b>659</b>	<b>1 598</b>

(a) The format for reporting NSW Government Finance Statistics has been amended to ensure consistency with the reporting framework used in the 2001–02 Budget Papers. Changes include the end of separate reporting of abnormal items and the consequent need to create a new revenue category (Capital Repatriations) and two new expense categories (Superannuation Valuations and Finance Valuations). Additionally there have been some minor reclassification between expenses and capital expenditure. However, the budgeted Surplus is unchanged from that reported in the 2000–01 Budget Papers.

Source: Financial Statement released by NSW Treasury. Figures may differ from data published in annual ABS publications.

23 ACTUAL PRIVATE NEW FIXED CAPITAL EXPENDITURE, CURRENT PRICES, NSW AND AUSTRALIA — TREND

Type of asset	Latest period	New South Wales			Australia		
		Latest figure	Change from prior period	Change from same period prior year	Latest figure	Change from prior period	Change from same period prior year
		\$m	%	%	\$m	%	%
New buildings and structures	Mar qtr 2001	629	-15.3	-34.9	2 102	-14.0	-25.8
Equipment, plant and machinery	Mar qtr 2001	2 700	-4.3	-4.8	7 612	1.2	-0.2
<b>Total</b>	Mar qtr 2001	<b>3 329</b>	<b>-6.6</b>	<b>-12.4</b>	<b>9 714</b>	<b>-2.5</b>	<b>-7.1</b>

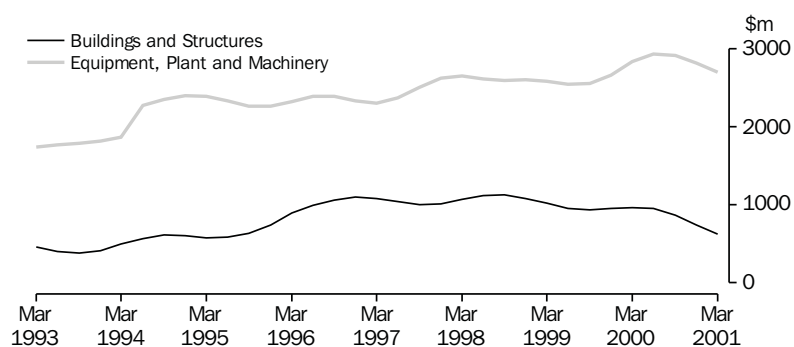
Source: Private New Capital Expenditure, State Estimates (Cat. no. 5646.0).

24 ACTUAL PRIVATE NEW FIXED CAPITAL EXPENDITURE, CURRENT PRICES — NSW, TREND

	Type of asset		
	New buildings and structures	Equipment, plant and machinery	Total
	\$m	\$m	\$m
<b>1999</b>			
December qtr	952	2 661	3 613
<b>2000</b>			
March qtr	966	2 835	3 801
June qtr	952	2 938	3 890
September qtr	872	2 918	3 790
December qtr	743	2 820	3 563
<b>2001</b>			
March qtr	629	2 700	3 329

Source: Private New Capital Expenditure, State Estimates (Cat. no. 5646.0).

25 ACTUAL PRIVATE NEW FIXED CAPITAL EXPENDITURE, CURRENT PRICES, NSW—TREND



Source: State Estimates of New Capital Expenditure (Cat. no. 5646.0).

26 INTERNATIONAL TRADE, IMPORTS(a) AND EXPORTS(b) — NSW AND AUSTRALIA(c)

	Latest period	New South Wales			Australia		
		Latest figure \$m	Change from prior period	Change from same period prior year	Latest figure \$m	Change from prior period	Change from same period prior year
			%	%		%	%
Overseas imports into NSW	Apr 2001	4 116	-4.8	16.5	9 581	-3.6	19.7
Total overseas exports(d)	Apr 2001	1 972	-4.1	22.4	9 740	-3.0	23.5
Export commodities and SITC(e) code							
Meat and meat preparations (01)	Apr 2001	127	-3.4	45.4	517	-8.6	34.6
Cereals and cereal preparations (04)	Apr 2001	125	5.4	32.9	447	-8.1	4.6
Wool and other animal hair (268)	Apr 2001	82	-33.2	38.8	295	-27.9	24.4
Coal, coke and briquettes (32)	Apr 2001	404	23.5	41.5	992	12.6	38.9
Iron and steel (67)	Apr 2001	14	23.9	-85.5	68	7.1	-55.9
Aluminium (684)	Apr 2001	136	-18.7	25.1	426	-8.2	27.5
Office machines and automatic data processing machines (75)	Apr 2001	31	-11.5	-13.3	52	-12.8	-1.5

(a) Figures shown are Customs value.

(b) Restrictions are placed on the release of statistics for certain commodities for reasons of confidentiality. The restrictions do not affect total export and import figures, but they can affect figures at State and commodity levels. More information on the treatment of confidential data in international merchandise trade statistics can be obtained from the Information Paper, *International Merchandise Trade Statistics, Australia: Data Confidentiality* (Cat. no. 5487.0), or the International Trade Confidentiality Manager on 02 6252 5409. Figures shown are Free On Board (FOB) values.

(c) All percentages are calculated using unrounded figures.

(d) Excludes re-exported goods.

(e) Standard International Trade Classification Revision 3.

Source: ABS unpublished data, *International Trade database*.

27 INTERNATIONAL TRADE, IMPORTS(a) AND EXPORTS(b) — NSW

	Overseas exports of SITC(c) commodities								
	Overseas imports into NSW	Total overseas exports(d)	Meat and meat preparations (01)	Cereals and cereal preparations (04)	Wool and other animal hair (268)	Coal, coke and briquettes (32)	Iron and steel (67)	Aluminium (684)	Office machines and automatic data processing machines (75)
	\$m	\$m	\$m	\$m	\$m	\$m	\$m	\$m	\$m
<b>1998-1999</b>	42 142	17 948	948	1 234	685	3 766	958	1 151	333
<b>1999-2000</b>	47 927	18 966	1 047	1 270	826	3 092	831	1 341	379
<b>2000</b>									
February	3 731	1 515	86	114	72	226	60	122	32
March	4 341	1 637	95	123	78	238	79	132	43
April	3 534	1 612	87	94	59	285	98	109	35
May	4 580	1 771	93	118	69	295	109	122	30
June	4 866	1 768	93	112	66	268	94	129	29
July	4 493	1 779	101	138	66	318	64	129	31
August	4 947	1 826	99	143	66	301	67	135	27
September	4 472	1 843	89	149	78	292	10	134	30
October	5 071	2 042	120	160	114	337	10	148	37
November	4 936	1 973	118	139	112	283	11	149	26
December	4 243	2 017	105	118	103	309	12	129	36
<b>2001</b>									
January	3 881	1 561	94	87	63	313	9	125	19
February	3 493	1 705	117	116	84	262	10	125	27
March	4 323	2 057	131	118	123	327	12	167	34
April	4 116	1 972	127	125	82	404	14	136	31

(a) Figures shown are Customs value.

(b) Restrictions are placed on the release of statistics for certain commodities for reasons of confidentiality. The restrictions do not affect total export and import figures, but they can affect figures at State and commodity levels. More information on the treatment of confidential data in international merchandise trade statistics can be obtained from the Information Paper, *International Merchandise Trade Statistics, Australia: Data Confidentiality* (Cat. no. 5487.0), or the International Trade Confidentiality Manager on 02 6252 5409. Figures shown are Free On Board (FOB) values.

(c) Standard International Trade Classification Revision 3.

(d) Excludes re-exported goods.

Source: ABS unpublished data, *International Trade database*.

## FOR MORE INFORMATION...

- INTERNET* **www.abs.gov.au** the ABS web site is the best place to start for access to summary data from our latest publications, information about the ABS, advice about upcoming releases, our catalogue, and Australia Now—a statistical profile.
- LIBRARY* A range of ABS publications is available from public and tertiary libraries Australia-wide. Contact your nearest library to determine whether it has the ABS statistics you require, or visit our web site for a list of libraries.
- CPI INFOLINE* For current and historical Consumer Price Index data, call 1902 981 074 (call cost 77c per minute).
- DIAL-A-STATISTIC* For the latest figures for National Accounts, Balance of Payments, Labour Force, Average Weekly Earnings, Estimated Resident Population and the Consumer Price Index call 1900 986 400 (call cost 77c per minute).

**INFORMATION SERVICE**

Data which have been published and can be provided within five minutes are free of charge. Our information consultants can also help you to access the full range of ABS information—ABS user-pays services can be tailored to your needs, time frame and budget. Publications may be purchased. Specialists are on hand to help you with analytical or methodological advice.

- PHONE* **1300 135 070**
- EMAIL* **client.services@abs.gov.au**
- FAX* 1300 135 211
- POST* Client Services, ABS, GPO Box 796, Sydney 1041

## WHY NOT SUBSCRIBE?

ABS subscription services provide regular, convenient and prompt deliveries of ABS publications and products as they are released. Email delivery of monthly and quarterly publications is available.

- PHONE* 1300 366 323
- EMAIL* subscriptions@abs.gov.au
- FAX* 03 9615 7848
- POST* Subscription Services, ABS, GPO Box 2796Y, Melbourne 3001



2130710007018  
ISSN 1031-8534

RRP \$18.00